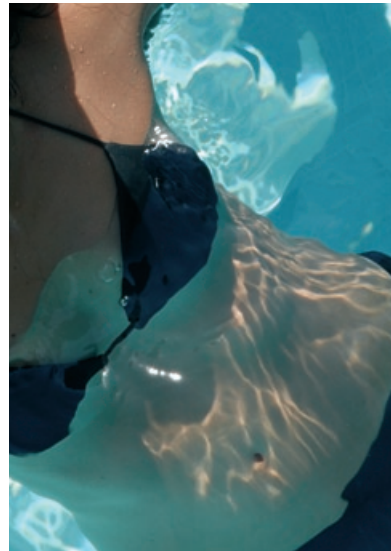
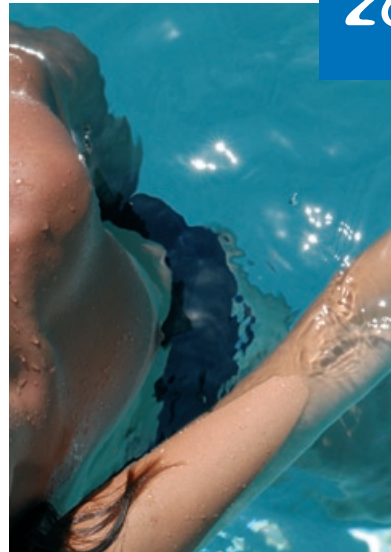
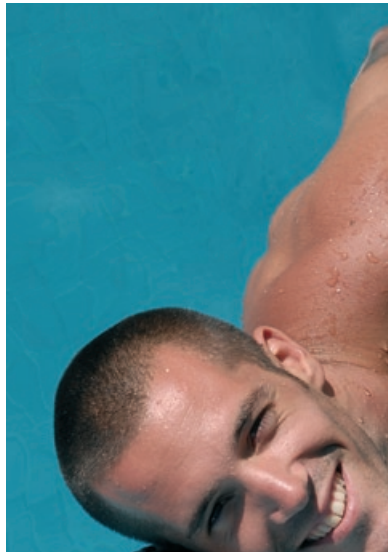




ZODIAC

Dehumidifiers

28^{°C}...

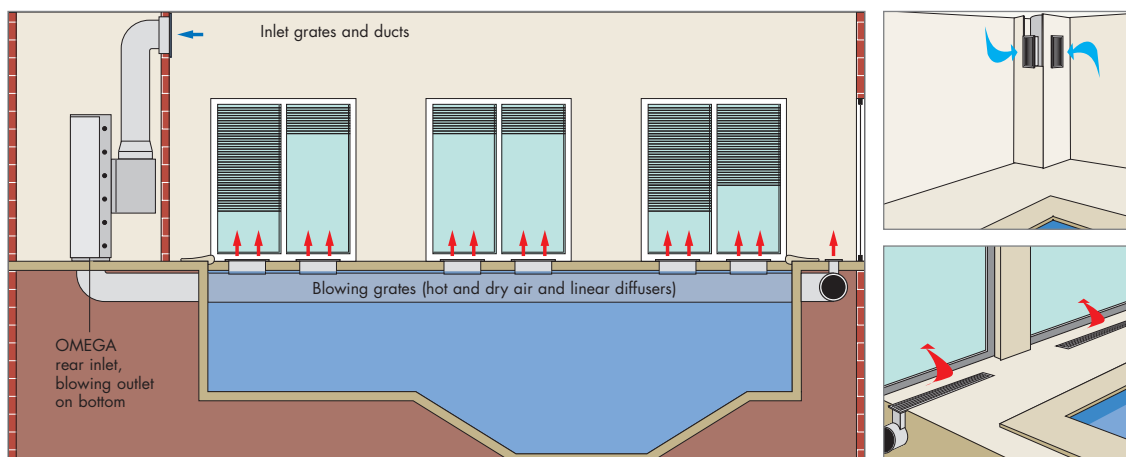


**Dehumidification
of indoor pools**

- The ideal relative humidity for an indoor pool is between 60% and 65%. Below 60%, the air is too dry and will be unpleasant to swimmers when they leave the water. Above 70%, the air is saturated with water vapour, making the atmosphere uncomfortable..
- Dehumidification is not only necessary for comfort, it is also of vital importance to protect the building where the pool is located. High humidity encourages the growth of mould, causing the building to deteriorate.
- When you install a pool in a closed space, you need to take numerous parameters into account (*ventilation, dehumidification, air and water heating, materials, etc.*). If you decide to build an indoor pool, we strongly recommend you to use the services of professionals (*pool specialists, architects*). For full information, visit our website at **www.psa-zodiac.com**.

IMPORTANT :

DEHUMIDIFIERS NEED TO BE INSTALLED BY A PROFESSIONAL. THIS GUARANTEES THAT YOUR UNIT IS CORRECTLY INSTALLED AND YOU WILL BE COVERED BY THE MANUFACTURER'S STANDARD 2-YEAR WARRANTY. THE WARRANTY BECOMES NULL AND VOID IF THE UNIT IS INSTALLED BY A NON-PROFESSIONAL.



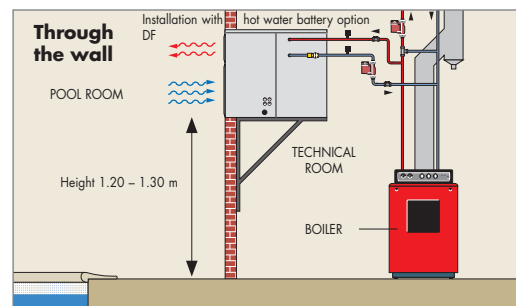
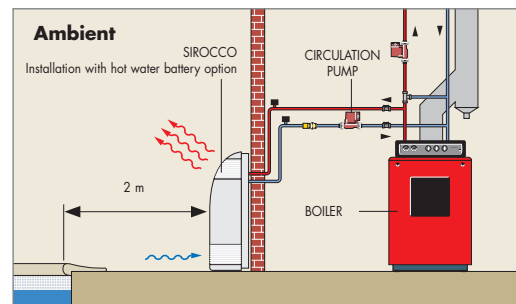


Dehumidification solutions

- Depending on the model, the dehumidifiers are installed
 - either in the pool room
 - or in the technical room

■ 3 types of installation :

- **Ambient** : the unit is located in the pool room more than 2 m from the pool (or according to building regulations).
- **Through the wall** : the unit is installed through the wall in an adjoining room.
- **Ducted** :
The most efficient solution to maintain the required humidity level. And particularly to remove condensation from glass surfaces.

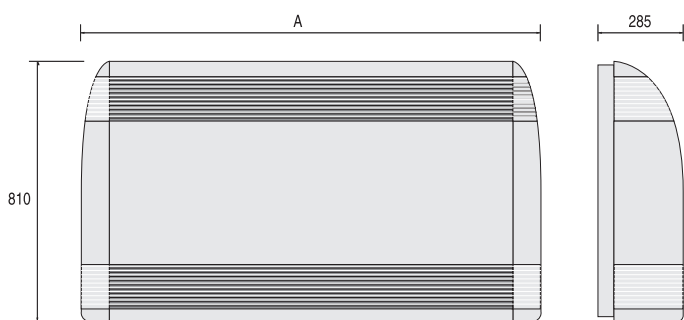


Removal of humid air :

A simple air extractor grille located near the technical room is sufficient. The grille is positioned at high or low level or often in a corner of the building.

Dry air blown in :

To heat glass surfaces and avoid condensation. The blower duct has 1 m grilles fitted the length of the glazed units.



Dimensions A :
 Sirocco 55 : 1030 mm
 Sirocco 80 : 1220 mm
 Sirocco 110 : 1410 mm

Advantages

Simplest and cheapest solution to keep the room at a comfortable relative humidity of 65%

- Very low noise level
- Dehumidification capacity 2.3 l/h - 4.6 l/h.

Equipment

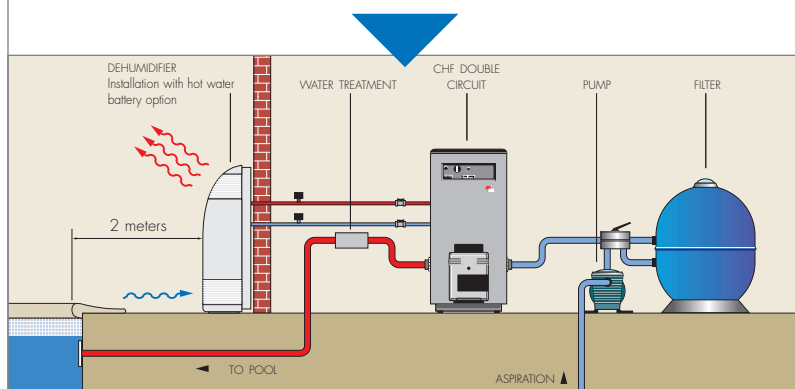
- Scroll compressor (Sirocco 55: blade compressor)
- Body of injected ABS and plastic-coated sheeting, adjustable blower grille
- Humidity controller or temperature and humidity controller (if heating option)
- EC conformity

Options :

The dehumidifiers can be fitted with an option to heat the air in the pool room, either an electric heating element or a hot water coil (radiator incorporated in the dehumidifier and connected to a boiler).

Installation

- For installation in the pool room more than 2 m from the pool
- Floor or wall mounting
- 230V power supply required
- Provide drain for condensate



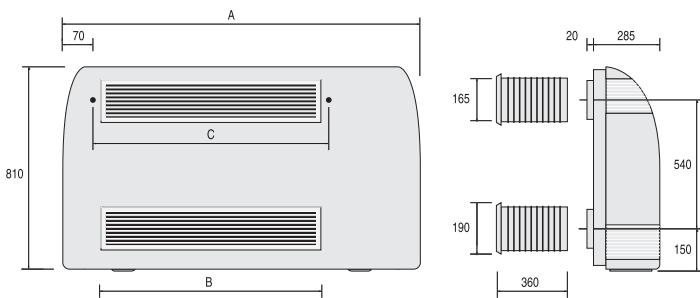
Model	Sirocco 55	Sirocco 80	Sirocco 110
Item code	W28SI55A	W28SI80A	W28SI110A
Capacity in l/h	2,3	3,3	4,6
Absorbed power (W)*	990	1100	1340
Delivered power (W)*	2080	2310	2810
Air flow (m ³ /h)	600	800	1000
Acoustic power (dBA)**	67,7	66,7	66,2
Acoustic power at 5 m (dBA)**	45,7	44,7	44,2
Power supply (A)	1-phas 230 V	1-phas 230 V	1-phas 230 V
Absorbed intensity	4,45	5,05	6,35
Condensate removal		Ø 16 flexible tube	
Weight (ambient model without option)	65	86	100

* under nominal conditions: air 30°C, humidity 70%.

**Values measured and certified to standards EN ISO 3741 and EN ISO 354 by the CTTM (Le Mans Technology Transfer Centre)

Sirocco

Through-the-wall version



Installation dimensions :
 Sirocco 55 : 618 x 165 mm (tolerance + 2 mm / - 0 mm)
 Sirocco 80 : 808 x 165 mm (tolerance + 2 mm / - 0 mm)
 Sirocco 110 : 998 x 165 mm (tolerance + 2 mm / - 0 mm)

A dimension :	B dimension :	C dimension (anchor points)
Sirocco 55 : 1030 mm	Sirocco 55 : 620 mm	Sirocco 55 : 653 mm
Sirocco 80 : 1220 mm	Sirocco 80 : 810 mm	Sirocco 80 : 843 mm
Sirocco 110 : 1410 mm	Sirocco 110 : 1000 mm	Sirocco 110 : 1033 mm

Advantages

- The dehumidifier can be installed outside the protection volume (standard C15-100)
- Only the air extractor and blower grilles are visible in the pool room
- Aesthetic
- Even lower noise level
- Dehumidification capacity 2.3 l/h - 4.6 l/h.

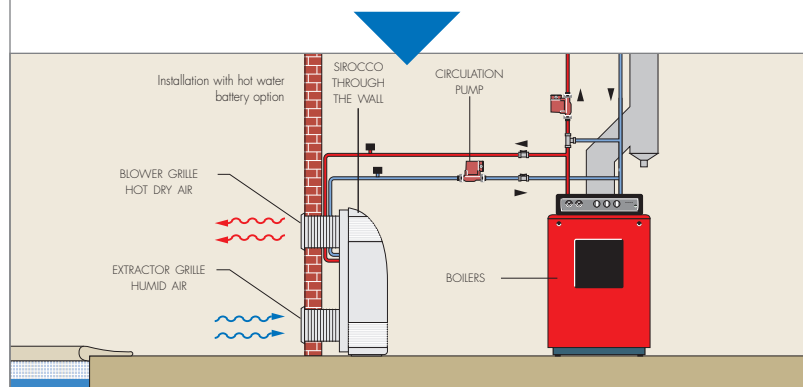
Equipment

- As for Sirocco Ambient
- Complete assembly, delivered with 2 ABS grilles and 2 sleeves to go through the wall
- Humidity controller or temperature and humidity controller (if heating option)
- EC conformity

Options : as for Sirocco Ambient

Installation

- Through-the-wall installation in a room adjoining the pool room
- 230V power supply required (DF 308 tri 400V)
- Provide drain for condensate



Model	Sirocco 55	Sirocco 80	Sirocco 110
Item code	W28SI55E	W28SI80E	W28SI110E
Capacity in l/h	2,3	3,3	4,6
Absorbed power (W)*	990	1100	1340
Delivered power (W)*	2080	2310	2810
Air flow (m ³ /h)	600	800	1000
Acoustic power (dBA)**	67,7	66,7	66,2
Acoustic power at 5 m (dBA)**	45,7	44,7	44,2
Power supply	1-phase 230 V	1-phase 230 V	1-phase 230 V
Absorbed intensity (A)	4,45	5,05	6,35
Condensate removal		Ø 16 flexible tube	
Weight (ambient model without option)	65	86	100

* under nominal conditions: air 30°C, humidity 70%.

**Values measured and certified to standards EN ISO 3741 and EN ISO 354 by the CTM (Le Mans Technology Transfer Centre)

DF through-the-wall version

28°C...

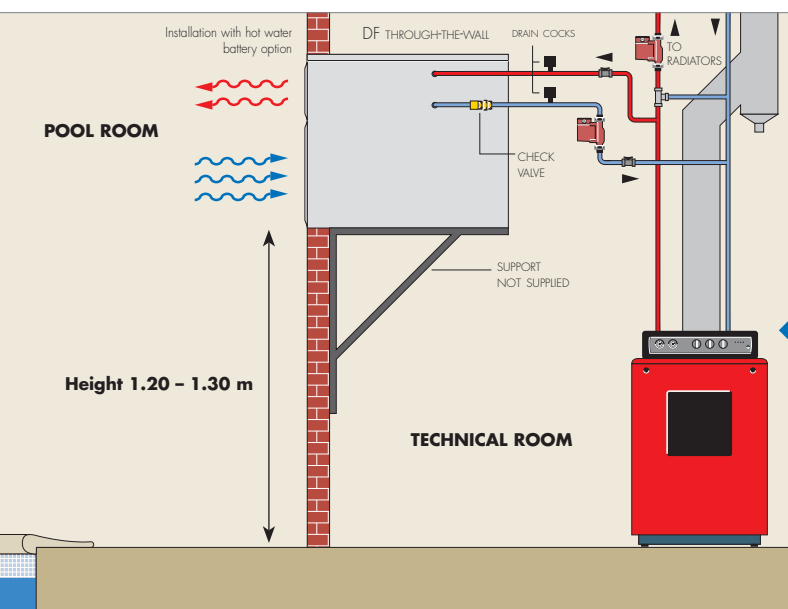


Advantages

- Excellent compromise between the cheapest solution (ambient) and the top-of-the-range solution (console + ducting).
- The dehumidifier can be installed outside the protection volume (French standard C15-100)
- Only the air extractor and blower grilles are visible in the pool room
- Aesthetic
- Low noise level
- Dehumidification capacity 3.5 l/h - 8 l/h

Installation

- Through-the-wall installation in a room adjoining the pool room
- 230V power supply required
- Provide drain for condensate



Model	DF 303 single-phase	DF 305 single-phase	DF 305 three-phase
Item code (through-the-wall model)	W28DF03E	W28DF05E	W28DF05ET
Capacity in l/h and 70% RH	3,5	5	5
Absorbed power (W)*	1500	1860	1860
Delivered power (W)*	3600	4465	4465
Air flow (m ³ /h)		1300	
Power supply	1-phase 230 V	1-phase 230 V	3-phase 400 V
Max. absorbed intensity (A)	13,15	16,05	7,25
Weight (without option)	184	185	185
A		765	
B		705	
C		890	

* under nominal conditions: air 30°C, humidity 70%.

DF through-the-wall version

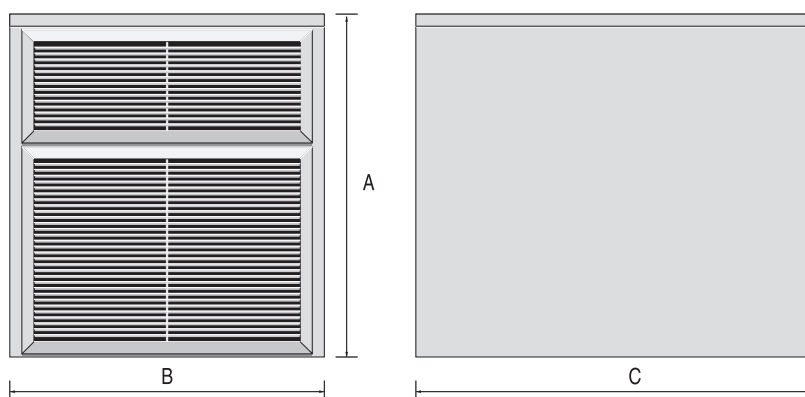


■ Equipment

- Scroll compressor
- Corrosion-resistant body, grille in anodized aluminium,
- Humidity controller or temperature and humidity controller (if heating option)
- EC conformity

Options :

The dehumidifiers can be fitted with an option to heat the air in the pool room, either an electric heating element or a hot water coil (*radiator incorporated in the dehumidifier and connected to a boiler*).



Model	DF 308 single-phase	DF 308 three-phase
Item code (through-the-wall model)	W28DF08EM	W28DF08E
Capacity in l/h and 70% RH	8	
Absorbed power (W)*	2600	
Delivered power (W)*	6240	
Air flow (m ³ /h)	1700	
Power supply	1-phase 230 V	3-phase 400 V
Max. absorbed intensity (A)	22,70	10,6
Weight (without option)	188	
A	830	
B	764	
C	955	

* under nominal conditions: air 30°C, humidity 70%.

DF ducted version

28°C...

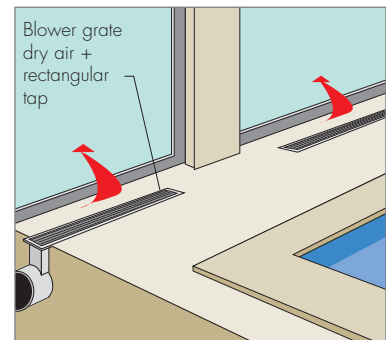
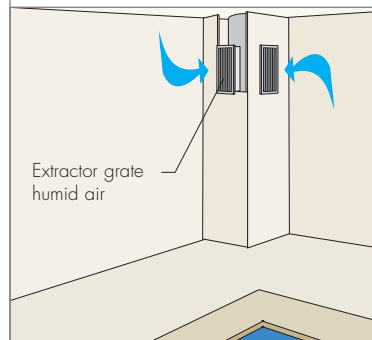
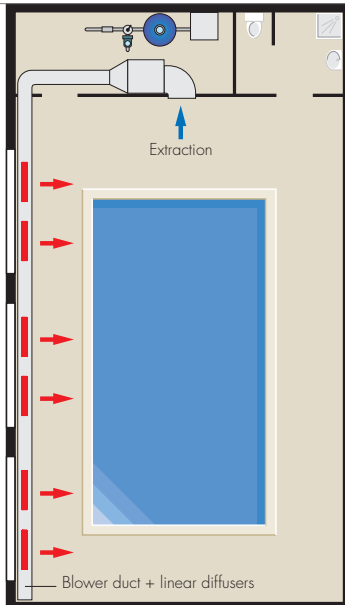


Advantages

- Only solution that effectively deals with condensation on glass surfaces
- Only the air extractor and blower grilles are visible in the pool room
- Aesthetic
- Low noise level
- Dehumidification capacity 3.5 l/h - 12 l/h.

Installation

- Through-the-wall installation in a room adjoining the pool room
- 230V or 400V power supply required
- Provide drain for condensate



Model	DF 303 single-phase	DF 305 single-phase	DF 305 three-phase
Item code (duct model)	W28DF03G	W28DF05G	W28DF05GT
Capacity in l/h	3,5	5	5
Absorbed power (W)*	1500	1860	1860
Delivered power (W)*	3600	4465	4465
Air flow (m ³ /h)	1300	1300	1300
Available pressure (mm EC)	10	10	10
Power supply	1-phase 230 V	1-phase 230 V	3-phase 400 V
Max. absorbed intensity (Amp.)	13,15	16,05	7,25
Condensate removal		Ø 20 mm tubing required	
Weight (kg)	156	157	157
A		890	
B		705	
C		500	

* under nominal conditions: air 30°C, humidity 70%.

DF ducted version

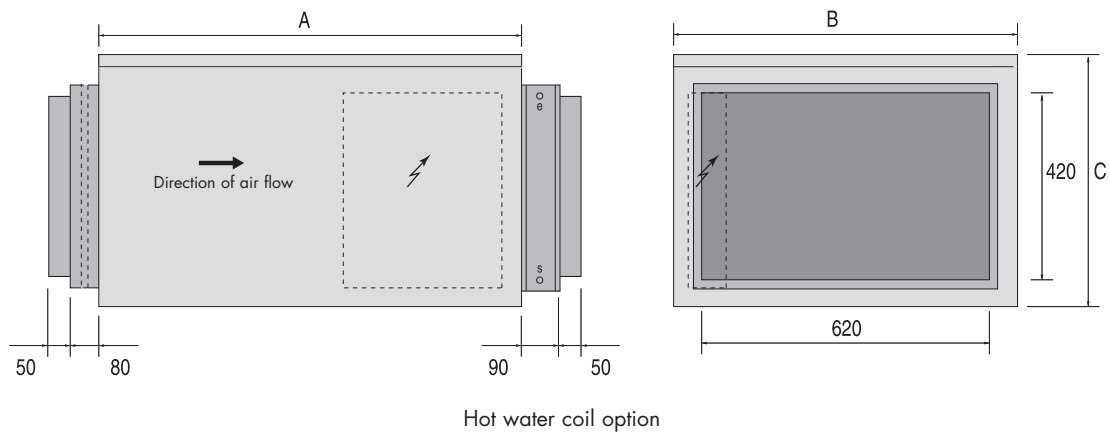


Equipment

- Scroll compressor
- Corrosion-resistant body
- Humidity controller or temperature and humidity controller (if heating option)
- EC conformity

Options :

The dehumidifiers can be fitted with an option to heat the air in the pool room, either an electric heating element or a hot water coil (radiator incorporated in the dehumidifier and connected to a boiler).



Model	DF 308 single-phase	DF 308 three-phase	DF 310 three-phase	DF 312 three-phase
Item code (duct model)	W28DF08GM	W28DF08G	W28DF10G	W28DF12G
Capacity in l/h	8	8	10	12
Absorbed power (W)*	2600	2600	3470	4170
Delivered power (W)*	6240	6240	7630	9180
Air flow (m ³ /h)	1700	1700	2000	2000
Available pressure (mm EC)	10	10	10	10
Power supply	1-phase 230 V	3-phase 400 V	3-phase 400 V	3-phase 400 V
Max. absorbed intensity (Amp.)	22,7	10,6	11,9	14
Condensate removal	Ø 20 mm tubing required			
Weight (kg)	160	160	158	167
A	955	955	955	955
B	764	764	864	864
C	590	590	705	705

* under nominal conditions: air 30°C, humidity 70%.

CAE and Oméga consoles

With ducting

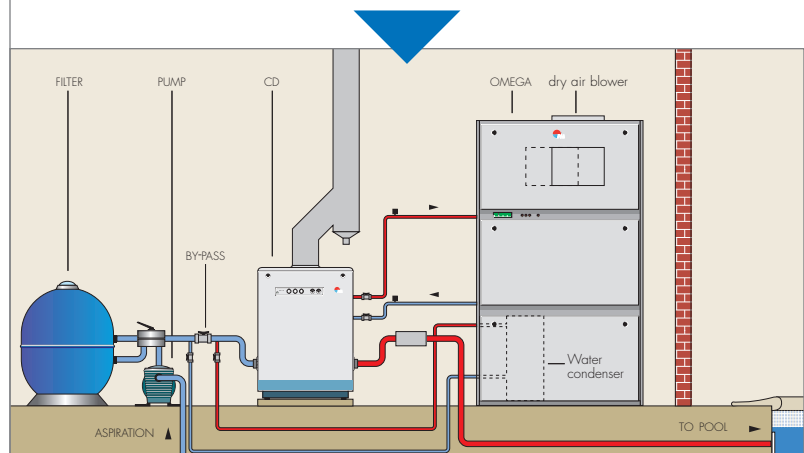
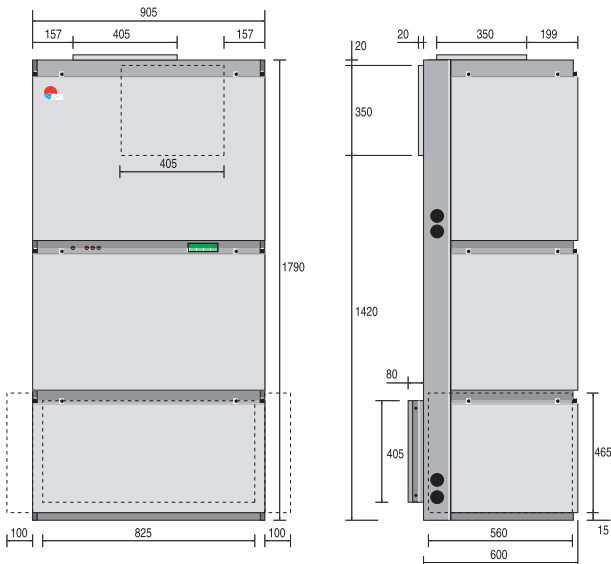


Advantages

- Only solution that effectively deals with condensation on glass surfaces
- Only the air extractor and blower grilles are visible in the pool room
- Aesthetic
- Low noise level
- Dehumidification capacity 8 l/h - 28 l/h.

Installation

- Through-the-wall installation in a room adjoining the pool room
- 230V or 400V power supply required
- Provide drain for condensate



Model	CAE 508 single-phase	CAE 508 three-phase	CAE 510 three-phase	CAE 513 three-phase
Item code	W28CAE8M	W28CAE8	W28CAE10	W28CAE13
Dehumidification capacity (l/h)*	8,0	8,0	10	13,5
Absorbed power (W)*	2710	2710	4040	5430
Delivered power (W)*	6500	6500	9695	13030
Air flow nominal (m ³ /h)	2040	2040	2720	3400
Available pressure (mm EC)	15	15	23	19
Max. air flow (m ³ /h)	2400	2400	3050	3800
Min. air flow (m ³ /h)	1780	1780	2380	2970
Power supply	230 V	400 V	400 V	400 V
Nominal intensity (A)	13,1	5,3	8,5	11
Max. absorbed intensity (Amp.)	27,3	8,6	15	17,5
Weight (without option)	228	228	235	239

* under nominal conditions: air 30°C, humidity 70%.

CAE and Oméga consoles

With ducting

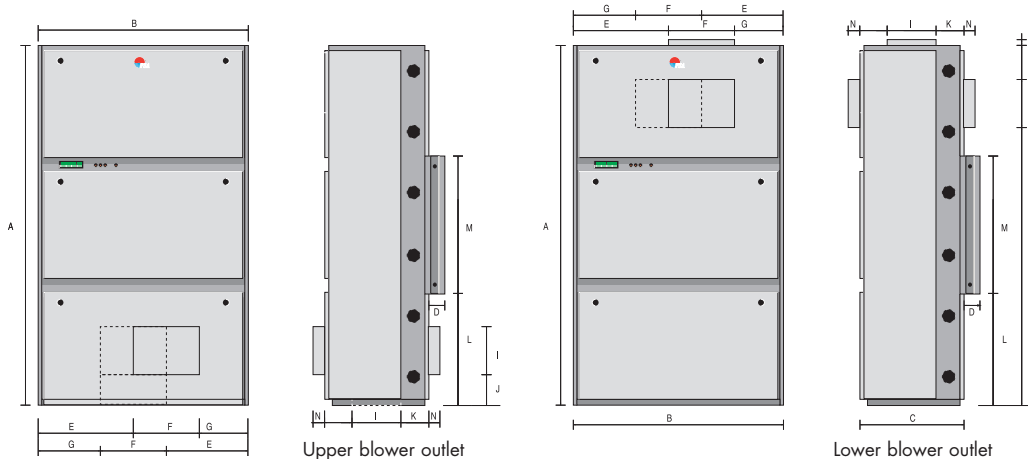


Equipment

- Scroll compressor
- Corrosion-resistant body
- Humidity controller or temperature and humidity controller (if heating option)
- EC conformity

Options :

The dehumidifiers can be fitted with an option to heat the air in the pool room, either an electric heating element or a hot water coil (*radiator incorporated in the dehumidifier and connected to a boiler*).



	A	B	C	D	E	F	G	H	I	J	K	L	M	N	O	Width of extractor intake
OMEGA 10 to 20	1940	1150	625	70	445	410	295	240	345	75	225	655	630	60	20	1060
OMEGA 28	2170	1734	652	102	413	908	413	50	387	240	216	673	824	50	0	1650

Model	Oméga 10 3-phase	Oméga 14 3-phase	Oméga 16 3-phase	Oméga 20 3-phase	Oméga 28 3-phase
Item code	W28OM10	W28OM14	W28OM16	W28OM20	W28OM28
Dehumidification capacity (l/h)*	10	14	16	20	28
Absorbed power (W)*	3840	4390	5830	6430	9900
Delivered power (W)*	9210	10530	13990	15430	23760
Air flow (m ³ /h)	3000	4000	5000	6000	8500
Available pressure (mm EC)	20				
Power supply	3-phase 400 V				
Absorbed intensity (A)	7,6	9,0	12,0	13,7	20
Maximum intensity (A)	13,5	16,3	19	21,8	25
Weight (without option) (kg)	342	344	346	397	516

* under nominal conditions: air 30°C, humidity 70%.

